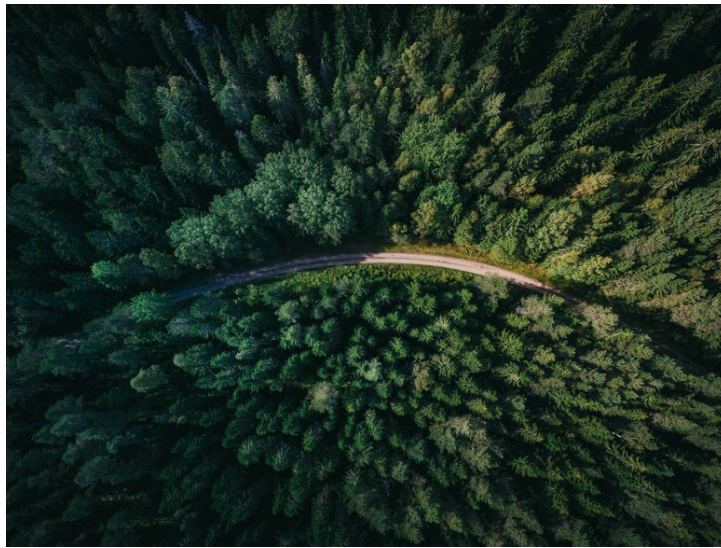


Press release

Efficient, customer-focused and eco-friendly

**Bauwerk Group streamlines its logistics processes, shortens supply routes and reduces the carbon emissions generated during transport.**



*Modern logistics solutions consist of a combination of efficiency and environmental awareness. Optimised, eco-friendly transport routes, top vehicle occupancy and digital transparency across the entire supply chain make it possible to shorten transport routes, reduce emissions and produce an even better service for the client. These must also not preclude flexibility, sustainability and speed; in fact, these objectives go hand in hand.*

On 1 January 2025, Bauwerk Group will start transforming processes at its finished goods warehouses and its approach to transport. The current storage facilities in Baidt (Germany) and Berneck (Switzerland) will be replaced with a central warehouse and distribution centre in Ravensburg, south Germany. This restructuring will take place following a three-month transition phase, between 1 October and 31 December 2024. Because of this change, Bauwerk Group will work with two new logistics contractors. The reliability and punctuality of goods deliveries will still be guaranteed during this transformation and centralisation of storage.

The consolidated warehouse and distribution centre will be operated by a new partner, Noerpel SE, serving as the central hub for transporting goods to markets in central Europe, enabling greater efficiency and speed in product deliveries overall.

### **Dual transport system for eco-friendlier deliveries**

A core element of the new set-up in Switzerland is the partnership with Camion Transport AG, a leading provider in the field of sustainable transport logistics. The company is investing in a fleet of environmentally friendly vehicles, continuously optimising its services to achieve top efficiency. As an innovative market leader for natural wooden floors, this is an ambition that Bauwerk Group is pursuing. In doing so, the dual transport system combining railway and road transportation plays a key role. While most of the longer distances are covered by train, local deliveries are handled by HGV drivers familiar with that particular area. The use of the dual transport system in Switzerland enables carbon emissions to be reduced by up to 25%, as compared to just using road transport. This also guarantees a high reliability of deliveries in future processes.

### **Faster and more efficient deliveries**

The optimum combination of rail and road transport modes reduces traffic delays in Switzerland, with up to 80% of all deliveries reaching their destination by noon the next day. In some markets, Bauwerk Group has been providing system-supported automated information to its clients since October 2024, relating to the delivery status and planned delivery time for their orders, with this information available on the day of delivery or in advance. This is not only tremendously convenient for the customer, but also brings clear environmental benefits, as the deliveries are almost always successful on the first attempt, eliminating any need for repeated delivery attempts.

Jörg Holderegger, Director of Logistics at Bauwerk Group and Project Manager, made a positive initial assessment: "We are more than happy with how this extensive strategic transition has been working out so far. The transition phase has started very well as a result of careful planning and true teamwork."

By merging the storage facilities and the strategic partnerships with Noerpel SE in Germany and Camion Transport AG in Switzerland, Bauwerk Group is optimising its logistics, in order to meet its customers' expectations in a more convenient and eco-friendly way. "This is another important step in making our processes more efficient, transparent and sustainable, and in contributing more to an environmentally friendly future," summarised Michael Rankl, Chief Operational Officer at Bauwerk Group.

St. Margrethen, November 2024  
Reprint free of charge/specify source

### **For press inquiries, please contact:**

Rainer Häupl  
bering\*kopal GbR, communications agency  
P + 49 (0) 711 74 51 75916  
rainer.haeupl@bering-kopal.de  
www.bering-kopal.de

**1** Bauwerk Group's modern logistics concept combines efficiency, transparency, fast delivery from storage and sustainable processes for meeting client expectations in an efficient and eco-friendly manner.

Photo: Bauwerk Group

**2** In Switzerland, Bauwerk Group is setting up a dual transport system in conjunction with Camion Transport AG. Combining railway and road transport modes makes it possible to reduce carbon emissions by up to 25%, while guaranteeing a high reliability of deliveries.

Photo: Camion Transport

**3** The warehouse and distribution centre in Ravensburg will be operated by Noerpel SE, serving as Bauwerk Group's central hub for transporting goods to markets in central Europe, enabling greater efficiency and speed in product deliveries overall. Photo: Noerpel SE

1.



2.



3.





## **Company Portrait**

Bauwerk Group employs over 1,750 people in its many divisions across the world. These people work every day to make unique, sustainable parquet floors with Swiss precision. The group, headquartered in St. Margrethen, has become a leading producer and supplier of premium wooden floors. The group's portfolio includes two brands, Bauwerk Parkett and BOEN, and since May 2022, the North American company Somerset Hardwood Flooring.

The group offers a comprehensive product range, including solid, 2-layer and 3-layer parquet, as well as specialised hardwood floors for sports facilities. It has production plants in Switzerland, Lithuania, Croatia and the US.